



Double Fuel Automatic Steel Boiler



2
YEARS
GUARANTEE

Smoke duct design of Maktek Double Fuel Automatic Steel Boiler ensures maximum warming comfort and economy for your home with maximum fuel efficiency, whether the fuel is wood or coal.

- Up to 69 kw heating capacity
Both wood and coal can be used as fuel
- Burns coal with maximum efficiency up to 20 mm diameter thanks to automatic fuel loading
- Provides economical heating effortlessly with automatic coal supply and manual wood loading chamber
- Uses the heat from the fuel at the highest level by four-pass smoke duct design
- Silent thermostat control fan ensures maximum fuel efficiency
- Glass wool insulation that prolongs boiler life by preventing heat loss
- Thermostat to keep the heater at the desired constant temperature
- Prevents the blowing out of fire with the fuel support from the bottom with helezone



MAKTEK
Wood | Coal | Pellet | Boiler

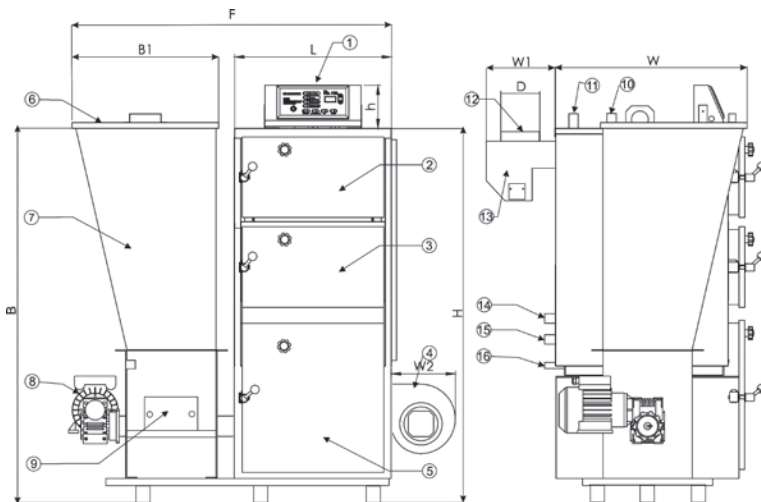
TECHNICAL SPECIFICATIONS				
BOILER TYPE		25 MKB-D	40 MKB-D	60 MKB-D
Capacity	kcal/h	25.000	40.000	60.000
Heating Power	kw	29	46	69
Weight	kg	377	420	500
Working Pressure	bar	3	3	3
Test Pressure	bar	4,5	4,5	4,5
H	mm	1455	1515	1565
h	mm	155	155	155
L	mm	550	582	668
W	mm	710	710	874
W1	mm	226	226	306
W2	mm	250	250	250
ØD	mm	160	160	200
F	mm	1192	1224	1336
B	mm	1180	1180	1275
B1	mm	570	570	620
Circulation Flow-Return	mm	1"	1 1/4"	1 1/2"
Safety Flow	mm	1"	1"	1 1/4"
Safety Return	mm	1"	1"	1 1/4"
Filling -Draining	mm	1/2"	1/2"	1/2"
Boiler Setting Range min.-max. °C		35/90	35/90	35/90
Boiler Water Volume	Lt	60	85	128
Open Expansion	Lt	60	100	150
>> ELECTRIC CIRCUIT				
Voltage /Frequency	V~/Hz	230/50	230/50	230/50
Power (maximum)	W	910	938	845
Electric Isolation Rate	IP	14A	14A	14A

* Circulation pump is installed by the installer or company for 69 kw capacity boilers. The boiler power values may vary according to the pump.

Double Fuel Automatic Steel Boiler

Double Fuel Automatic Steel Boiler Standards

- Both wood and coal can be used as fuel.
- Burns coal with maximum efficiency up to 20 mm diameter thanks to automatic fuel loading.
- High efficiency heating for coal and all other solid fuels.
- Ability to set and monitor the temprature of heating water in the system with digital display.
- Electronic control panel.
- Safe use against overheating with safety thermostat.
- Saves energy with special body design.
- Ensures the burning of the coal homogeneously by the combustion air from the peripheral surfaces of the combustion chamber.
- It is designed to use fuel options such as hazelnut coal, prina, hazelnut shell.
- Ability to monitor loading and waiting times from the electronic control panel by adjusting from the digital display.
- The abrasions which are formed as a result of heating are at minimum level with casting combustion chamber.
- Achieves highest efficiency with extremely quiet operation speed controlled flapped fan.
- Ashes are poured into the ash drawer thanks to automatic ash loading feature.
- Wet rotor, 3 speed stage circulation pump provides the desired circulation and energy saving is provided.
- When the fuel in the boiler is completely exhausted and the system temperature drops below 25 degrees, the unit switches itself off automatically and prevents unnecessary operation of fan, pump and loading motor.
- Economical and efficient combustion settings can be done with chimney flap.
- Uses the acquired heat from the fuel at the highest level by 4-pass combustion chamber design.
- CE certified.
- Extremely silent and thermostatically controlled fan supplies the air required to fully combust the fuel.
- The fuel setting is made with two buttons on the control panel, one is for setting the waiting time and the other is for setting the loading time. The setting times of both buttons can be monitored by lighted electronic display. This adjustment system allows the user to set the device very easily and with the desired accuracy.
- Flame extinguishing is prevented since fuel loading is made from the bottom through the helezone.
- 2 year warranty, widespread service organization.



- | | |
|-----------------------------|----------------------------------|
| 1. Control Panel | 9. Bunker Fuel Discharging Cover |
| 2. Boiler Cleaning Lid | 10. Circulation Inlet |
| 3. Wood Loading Lid | 11. Safety Inlet |
| 4. Fan | 12. Chimney Outlet Pipe |
| 5. Boiler Fuel Ignition Lid | 13. Smoke Box |
| 6. Griddle | 14. Circulation Return |
| 7. Bunker | 15. Safety Return |
| 8. Engine with reductor | 16. Filling- Draining |



Headquarters

10013 Street No: 14 AOSB Çiğli / İZMİR / TURKEY
Phone: +90 232 449 5000(pbx)
Fax: +90 232 328 0486

export@maktek.com.tr | maktek.com.tr

Istanbul Office

Seyit Nizam Mah. Demirciler Sitesi,
Street 7 No:68 Zeytinburnu / İSTANBUL / TURKEY
Phone: +90 212 415 4870 - 546 7367
Fax: +90 212 415 9687

MAKTEK
Wood | Coal | Pellet | Boiler